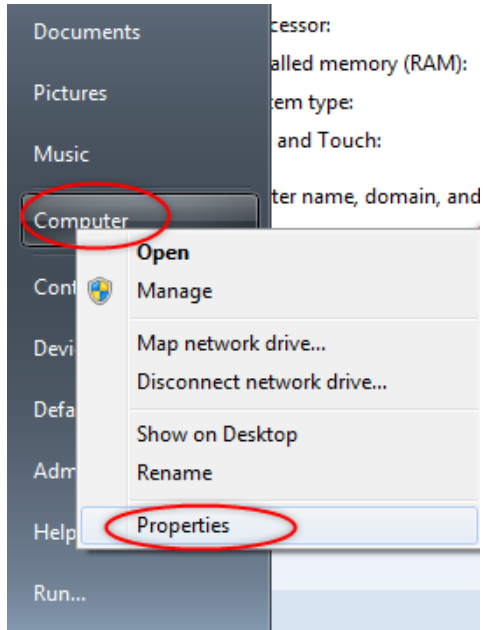


How to find Machine Name or Asset Tag#

Find your computer name:

1. Click on "Start"
2. Right click "Computer" in the Start Menu and click on "Properties".



3. "Computer Name" is listed under "Computer name, domain, and workgroup settings"

[View basic information about your computer](#)

Windows edition

Windows 7 Enterprise
Copyright © 2009 Microsoft Corporation. All rights reserved.
Service Pack 1

System

Rating: [System rating is not available](#)

Processor: Intel(R) Core(TM)2 Duo CPU E8600 @ 3.33GHz 3.33 GHz

Installed memory (RAM): 4.00 GB (3.50 GB usable)

System type: 32-bit Operating System

Pen and Touch: No Pen or Touch Input is available for this Display

Computer name, domain, and workgroup settings

Computer name: **PCName123** [Change settings](#)

Full computer name: PCName123



Computer description:

Workgroup: CCC

Windows activation

Windows is activated

Product ID: 00392-918-5000002-85777 [Change product key](#)



Find your Asset Tag Number (*if your computer has one):

1. Look at the front or top of the CPU for a White Tag with Black Numbers, Bar Code and Tri-C Logo like this one:



2. Newer equipment will not have a Tag Number, only a label that reads: PROPERTY of CUYAHOGA COMMUNITY COLLEGE like this one:

